



Pressure Progress Test Device DVPG / 3K

The compact, transportable Pressure Progress Test Device DVPG / 3K is designed for the leak testing of pneumatical circuits, which are pre-filled up to the target pressure. Typical applications are vehicles for the transport of commercial goods and passengers. The integrated UPS allows a continuous operation of up to 8 hours. The tester is equipped with a specially designed holding device, which allows a problem-free attachment to the vehicle frame.

Operating methods

Three channel operation

System

µPC with Solid State Disk (SSD),
16 bit A/D converter module

Display

8-line display with 40 characters each,
blue-white design

Pressure sensors

High precision gauge sensors 21 bar

Measuring range

0.00 to 20.00 bar

Maximum Deviations

Gauge pressure: 1 %
referred to full scale value

Result unit

bar

Rating indication

Display, LEDs

Test modes

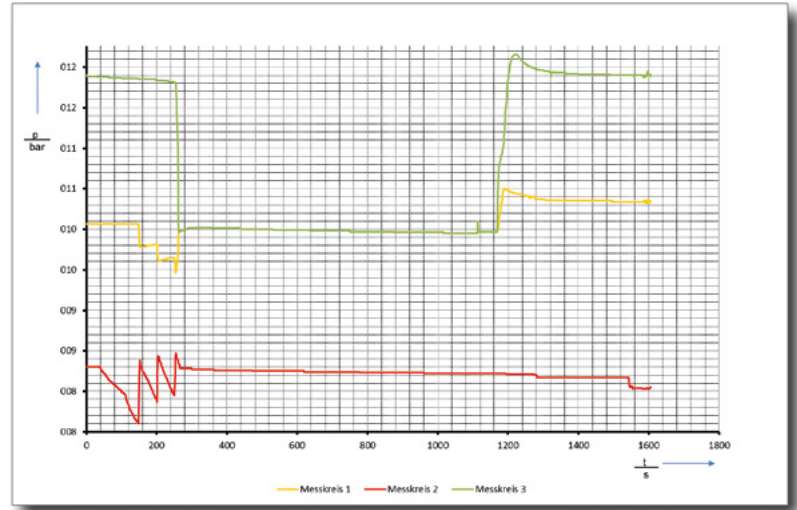
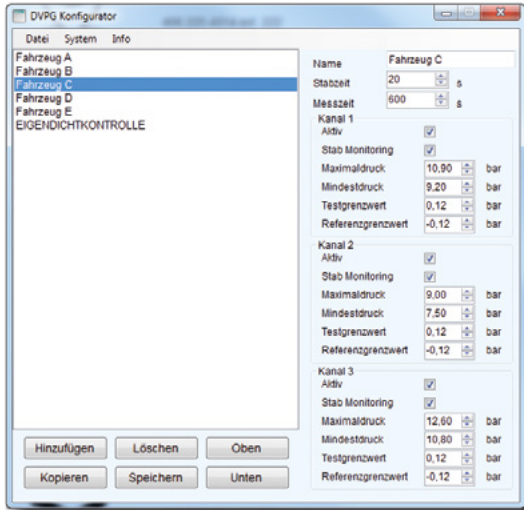
Pressure decay

Parameterization

Via XML file (generated with CETA XML
editor)

Programmable test phases

Stabilising, measuring



Test mode specific limits (individual for each channel)

Stabilising pressure tolerances,
Differential pressure thresholds

Operation

Keypad (20 keys), Stainless steel, IP 65

Parameter memory

Individually parameterisable test programs
with alphanumeric program names. Test
programs can be exported and imported as
an XML file via the USB interface

Power supply

Current consumption

9 - 36 V DC, 6 A max., wrong polarity and
short circuit protected, Neutrik cable plug
NC3FX

Maximum input pressure

21 bar

Pneumatic connections

Plug-in nipple RBE 03

Dimensions and weight

(inclusive handles, holding device
and pneumatic connections)
450 x 270 x 220 mm (W x H x D)
Weight approx. 10 kg

Scope of delivery

Power supply, Documentation on CETA-
USB-Stick, Excel macro for measuring
curve analysis, Parameterization software,
calibration certificate, EU declaration of
conformity

Warranty

3 years

Accessories (optional)

Specially assembled test hoses, cables for
simple clamping to the vehicle battery,
label printer

